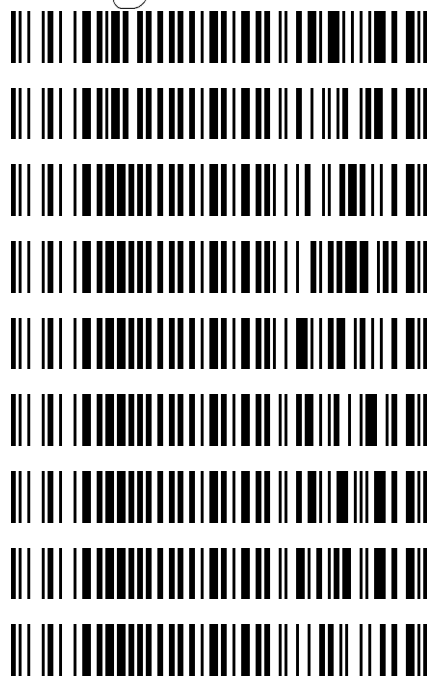


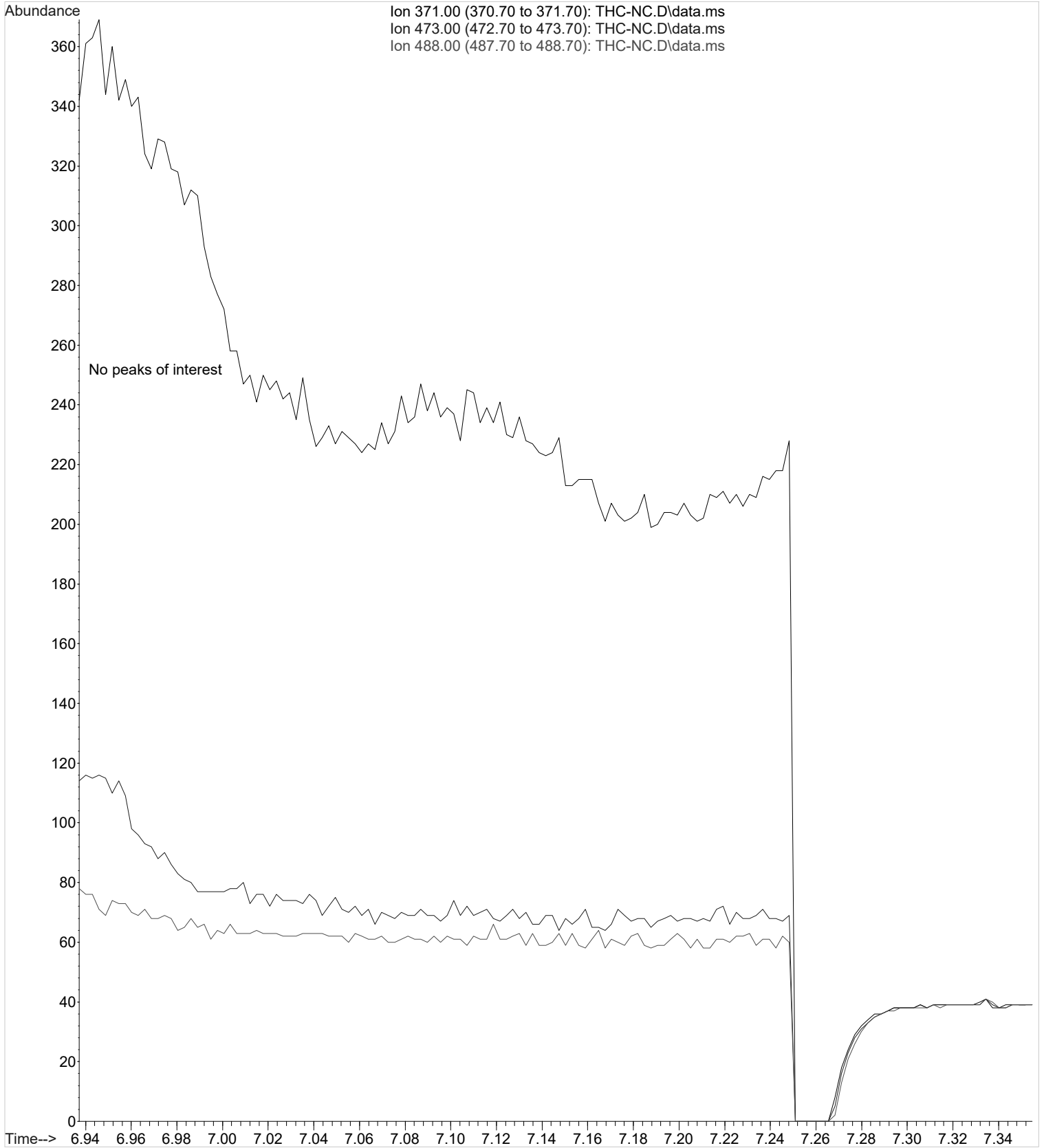
**Worklist: 2387**

<u>LAB_CASE</u>	<u>ITEM</u>	<u>TASK_ID</u>	<u>DESCRIPTION</u>
M2018-2126	3	115327	AM 3 Urine Carboxy-THC
M2018-2273	2	115335	AM 3 Urine Carboxy-THC
P2018-1044	1	115326	AM 3 Urine Carboxy-THC
P2018-1060	1	115328	AM 3 Urine Carboxy-THC
P2018-1162	1	115330	AM 3 Urine Carboxy-THC
P2018-1235	1	115331	AM 3 Urine Carboxy-THC
P2018-1244	1	115332	AM 3 Urine Carboxy-THC
P2018-1248	1	115333	AM 3 Urine Carboxy-THC
P2018-1303	1	115334	AM 3 Urine Carboxy-THC

*Bwylee*



File :C:\My Files\cshrum\Desktop\Consolidated\Data\URINE\am 3 work  
... list 2387\THC-NC.D  
Operator : ISP\datastor  
Instrument : Major Mass Spec  
Acquired : 09 May 2018 14:30 using AcqMethod U-CANN 3-2018.M  
Sample Name: Negative Control  
Misc Info : Lot # POC112116; AM #3 Worklist 2387



Data Path : C:\My Files\cshrum\Desktop\Consolidated\Data\URINE\am 3 worklist 2387\  
Data File : THC-PC1.D  
Acq On : 09 May 2018 14:42  
Operator : ISP\datastor  
Sample : Spiked Positive c-THC Control  
Misc : c-THC lot # 0497429 in Negative Lot # POC112116; Worklist 2387  
ALS Vial : 32 Sample Multiplier: 1

Integration Parameters: events.e  
Integrator: ChemStation

Method : C:\gcms\1\methods\TOX.M  
Title :

Signal : EIC Ion 371.00 (370.70 to 371.70): THC-PC1.D\data.ms

peak #	R.T. min	first scan	max scan	last scan	PK TY	peak height	corr. area	corr. % max.	% of total
1	6.999	7	23	44	BV 2	3020	59690	100.00%	100.000%

Sum of corrected areas: 59690

Signal : EIC Ion 473.00 (472.70 to 473.70): THC-PC1.D\data.ms

peak #	R.T. min	first scan	max scan	last scan	PK TY	peak height	corr. area	corr. % max.	% of total
1	7.000	8	23	57	BB 2	1093	21742	100.00%	100.000%

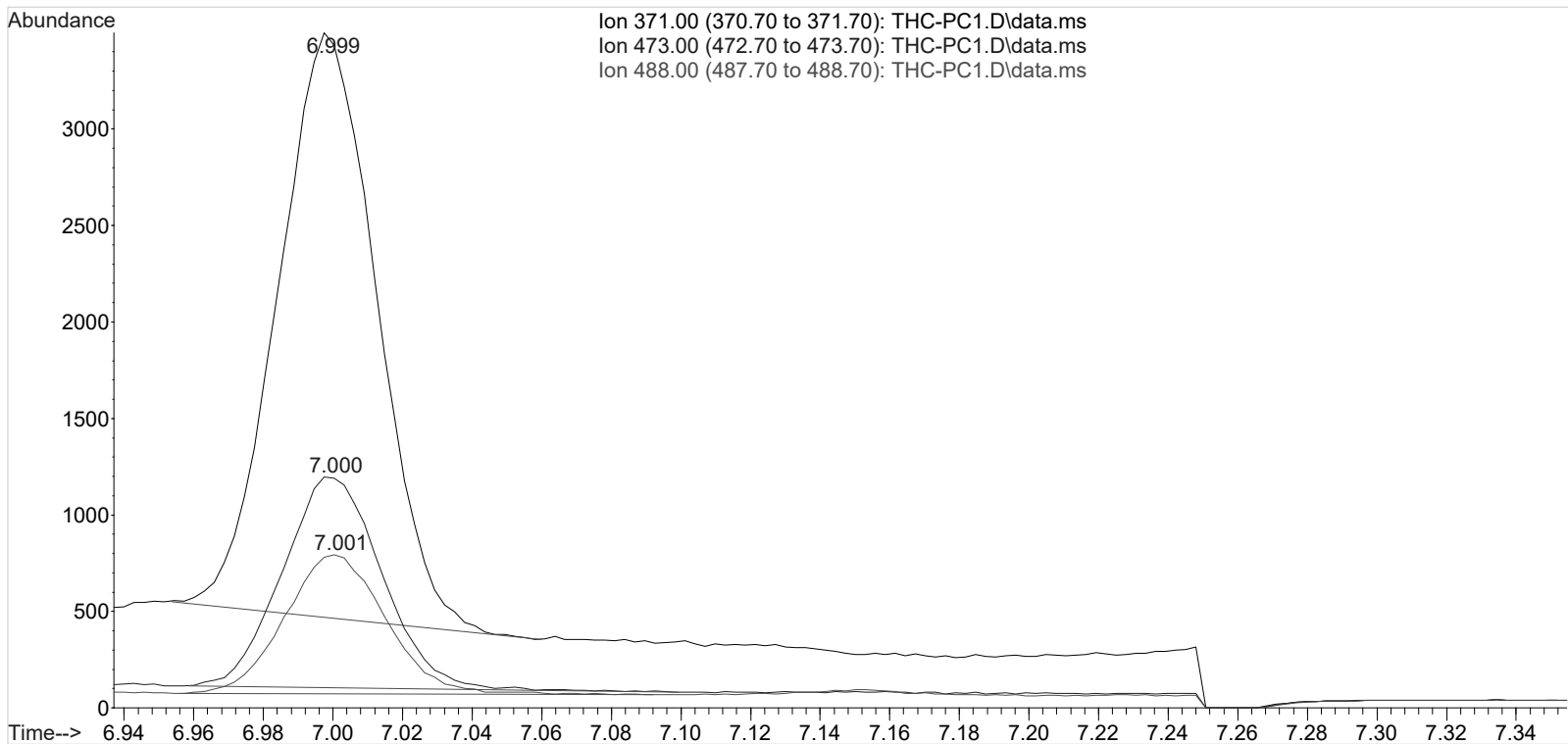
Sum of corrected areas: 21742

Signal : EIC Ion 488.00 (487.70 to 488.70): THC-PC1.D\data.ms

peak #	R.T. min	first scan	max scan	last scan	PK TY	peak height	corr. area	corr. % max.	% of total
1	7.001	8	23	55	BB 2	718	14513	100.00%	100.000%

Sum of corrected areas: 14513

TOX.M Thu May 10 08:17:15 2018



Data Path : C:\My Files\cshrum\Desktop\Consolidated\Data\URINE\am 3 worklist 2387\  
 Data File : THC-PC2.D  
 Acq On : 09 May 2018 19:12  
 Operator : ISP\datastor  
 Sample : Spiked Positive c-THC Control  
 Misc : c-THC lot # 0497429 in Negative Lot # POC112116; Worklist AM #3; Worklist 2387  
 ALS Vial : 32 Sample Multiplier: 1

Integration Parameters: events.e  
 Integrator: ChemStation

Method : C:\gcms\1\methods\TOX.M  
 Title :

Signal : EIC Ion 371.00 (370.70 to 371.70): THC-PC2.D\data.ms

peak #	R.T. min	first scan	max scan	last scan	PK TY	peak height	corr. area	corr. % max.	% of total
1	6.992	3	20	43	BV	5279	103927	100.00%	100.000%

Sum of corrected areas: 103927

Signal : EIC Ion 473.00 (472.70 to 473.70): THC-PC2.D\data.ms

peak #	R.T. min	first scan	max scan	last scan	PK TY	peak height	corr. area	corr. % max.	% of total
1	6.993	4	21	53	BV	1912	37793	100.00%	100.000%

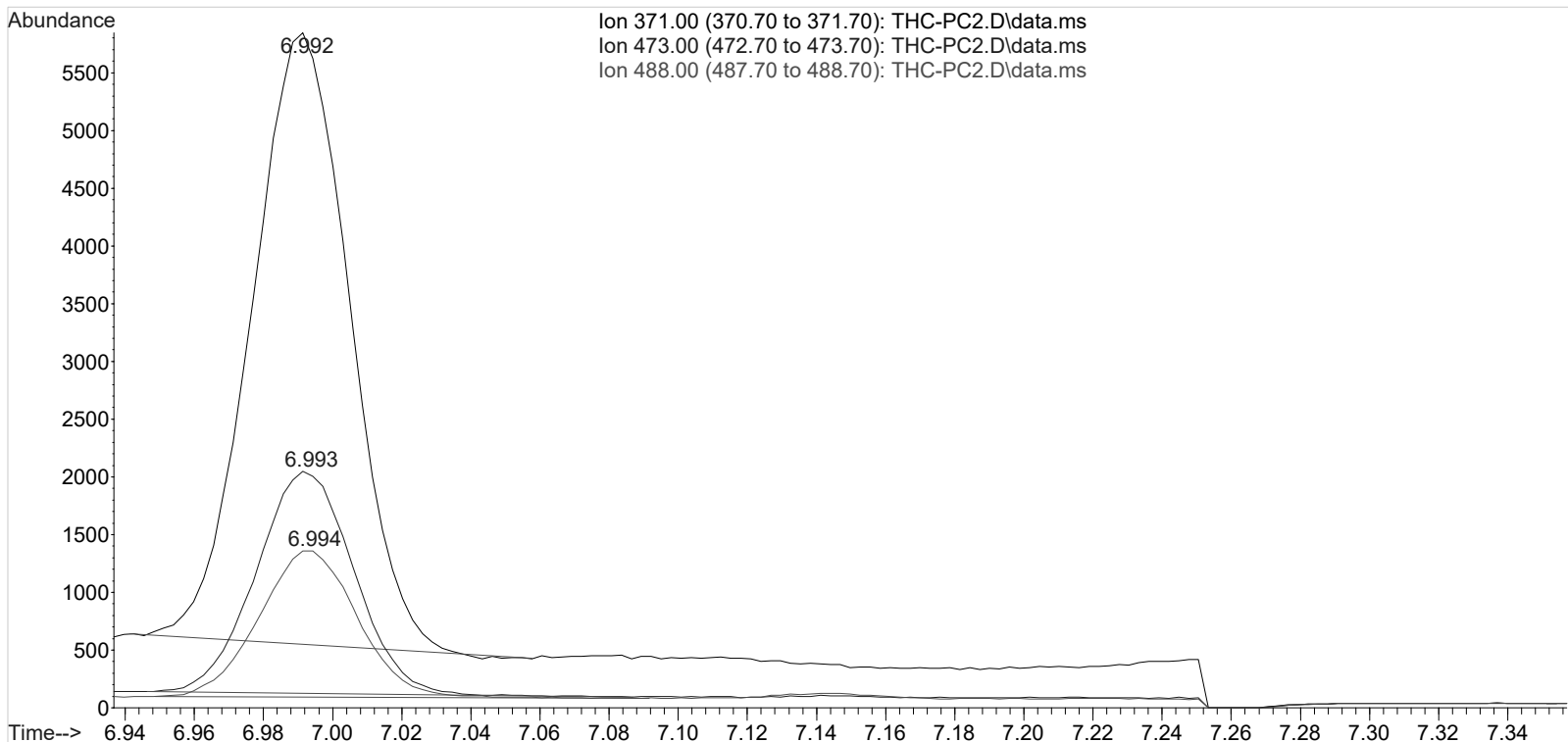
Sum of corrected areas: 37793

Signal : EIC Ion 488.00 (487.70 to 488.70): THC-PC2.D\data.ms

peak #	R.T. min	first scan	max scan	last scan	PK TY	peak height	corr. area	corr. % max.	% of total
1	6.994	5	21	55	BV	1270	25214	100.00%	100.000%

Sum of corrected areas: 25214

TOX.M Thu May 10 08:17:54 2018



9

Area Percent Report

Data Path : C:\My Files\cshrum\Desktop\Consolidated\Data\URINE\am 3 worklist 2387\  
 Data File : THC-C3.D  
 Acq On : 09 May 2018 15:05  
 Operator : ISP\datastor  
 Sample : Biorad C3 Control  
 Misc : C3 Lot # 68440; Worklist 2387  
 ALS Vial : 33 Sample Multiplier: 1

Integration Parameters: events.e  
 Integrator: ChemStation

Method : C:\gcms\1\methods\TOX.M  
 Title :

Signal : EIC Ion 371.00 (370.70 to 371.70): THC-C3.D\data.ms

peak #	R.T. min	first scan	max scan	last scan	PK TY	peak height	corr. area	corr. % max.	% of total
1	6.995	7	21	42	BV 2	906	18613	100.00%	100.000%

Sum of corrected areas: 18613

Signal : EIC Ion 473.00 (472.70 to 473.70): THC-C3.D\data.ms

peak #	R.T. min	first scan	max scan	last scan	PK TY	peak height	corr. area	corr. % max.	% of total
1	6.997	8	22	55	BV 2	342	6601	100.00%	100.000%

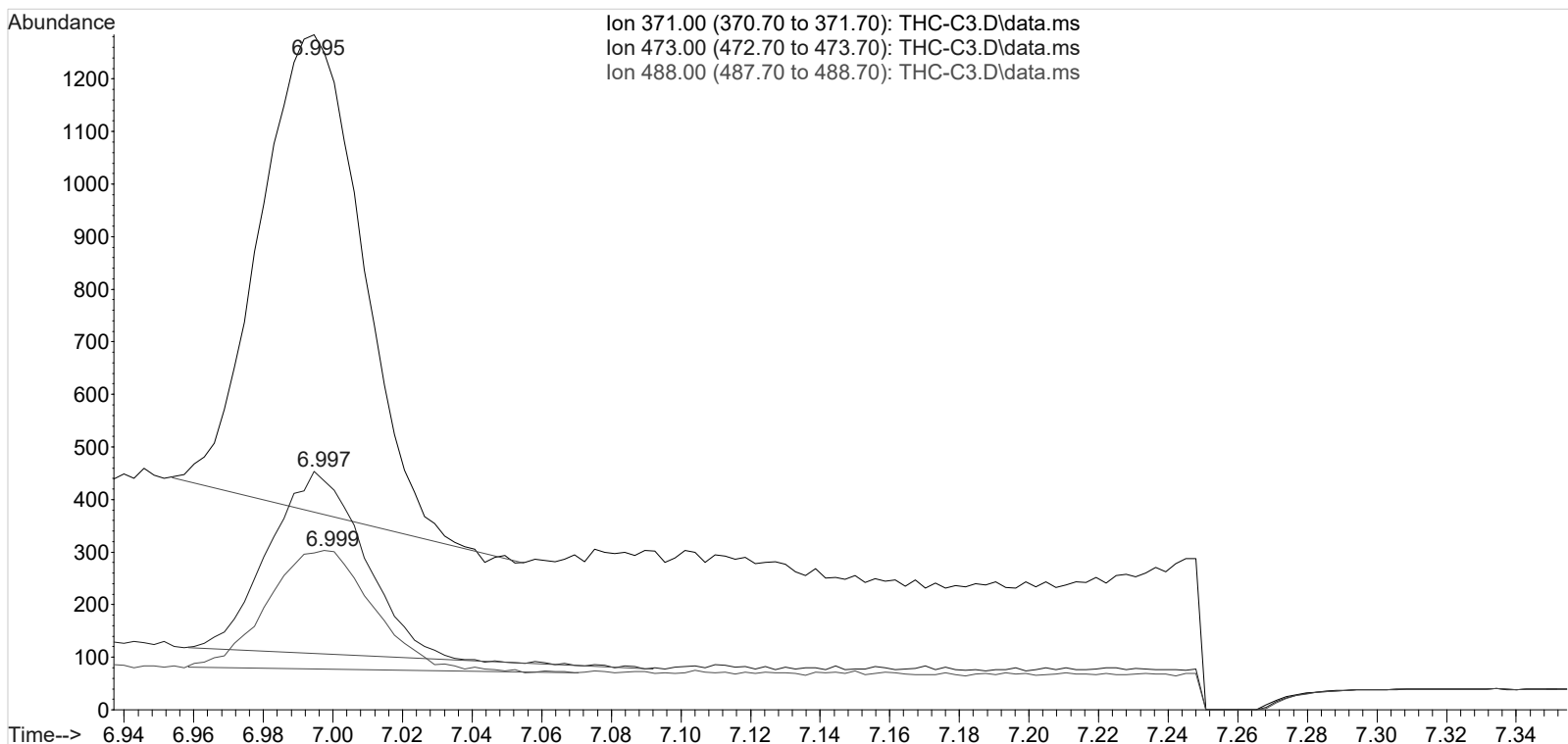
Sum of corrected areas: 6601

Signal : EIC Ion 488.00 (487.70 to 488.70): THC-C3.D\data.ms

peak #	R.T. min	first scan	max scan	last scan	PK TY	peak height	corr. area	corr. % max.	% of total
1	6.999	8	23	47	BB 2	225	4729	100.00%	100.000%

Sum of corrected areas: 4729

TOX.M Thu May 10 08:18:35 2018



## 2.4.4 Carboxy-THC QC Calculations (AM #3)<sub>CS</sub>

Run Date: 5/9/2018

Case Calculations:  
Lab Case #: BRC3 68440

<i>EIC Ion 371 Corr. Area:</i>	18613	
<i>EIC Ion 473 Corr. Area:</i>	6601	473:371 Ratio: <span style="background-color: #cccccc; padding: 2px; text-align: center;">0.355</span>
<i>EIC Ion 488 Corr. Area:</i>	4729	488:371 Ratio: <span style="background-color: #cccccc; padding: 2px; text-align: center;">0.254</span>

### Quality Control Calculations:

Retention Time acceptable range: 6.899 to 7.092

	<i>1st ctrl</i>	<i>2nd ctrl</i>
<i>EIC Ion 371 Corr. Area:</i>	59690	103927
<i>EIC Ion 473 Corr. Area:</i>	21742	37793
<i>EIC Ion 488 Corr. Area:</i>	14513	25214

*Approximate minimum corrected area of 371 ion: ~* 11938

<i>Ratio of 473:371</i>				
<i>1st ctrl</i>	<b>0.364</b>	<i>2nd ctrl</i>	<b>0.364</b>	<i>avg.</i> <b>0.364</b>
<i>Accepted Range (+/- 20%):</i> <span style="background-color: #cccccc; padding: 2px; text-align: center;"><b>0.291</b></span> - <span style="background-color: #cccccc; padding: 2px; text-align: center;"><b>0.437</b></span>				

<i>Ratio of 488:371</i>				
<i>1st ctrl</i>	<b>0.243</b>	<i>2nd ctrl</i>	<b>0.243</b>	<i>avg</i> <b>0.243</b>
<i>Accepted Range (+/- 20%):</i> <span style="background-color: #cccccc; padding: 2px; text-align: center;"><b>0.194</b></span> - <span style="background-color: #cccccc; padding: 2px; text-align: center;"><b>0.291</b></span>				

Carboxy-calculation sheet  
Revision 0 effective date 10/23/13  
Issuing authority: Quality Manager